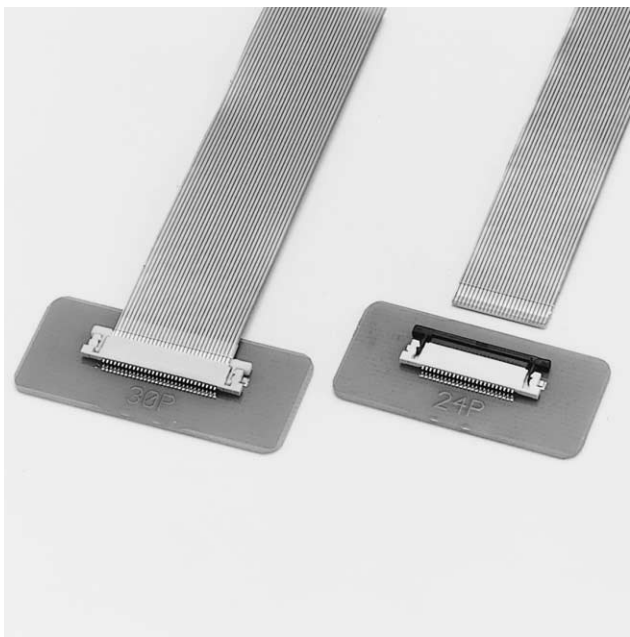


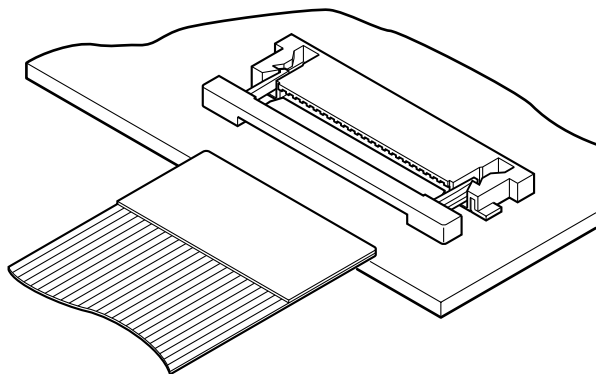
# FLH CONNECTOR



Connectors for FPC



**Compact connector with just 1.2mm (.047") high after mounting on the PC board.**



## Features

### • Ultra thin design

The FLH connector is the ZIF type ultra thin connector, with the mounting height of only 1.2mm (.047"). Applicable to 0.3mm (.012") thick FPCs.

### • Heat resistant design suitable for surface mounting

The housing is made of heat resistant resin to allow reflow soldering.

### • In-line surface mounting

Has an in-line surface mount tails for easy inspection.

### • Two types of connections

The connector is available in either the normal or reverse configurations. The FPC is positioned with its mating surfaces facing upward for the normal configured connector, while the reverse configuration requires that the FPC be positioned with its mating surfaces facing down. The engineer has greater freedom in designing his circuitry.

### • Embossed tape for automatic mounting

The FLH connector can be packaged in embossed tape for automatic mounting.

## Specifications

- Current rating: 0.5A AC, DC
- Voltage rating: 50V AC, DC
- Temperature range: -25°C to +85°C  
(including temperature rise in applying electrical current)
- Contact resistance: Initial value/40m Ω max.  
After environmental testing/60m Ω max.
- Insulation resistance: 800M Ω min.
- Withstanding voltage: 200V AC/minute
- Applicable FPC: Lead pitch/0.5mm(.020")  
Lead width/0.35mm(.014")  
Mating part thickness/  
0.30±0.03mm (.012"±.001")

<Note>FPC to be actually used should be checked for applicability.

\* Contact JST if Lead-Free product is required.

\* Refer to "General Instruction and Notice when using Terminals and Connectors" at the end of this catalog.

\* Contact JST for details.

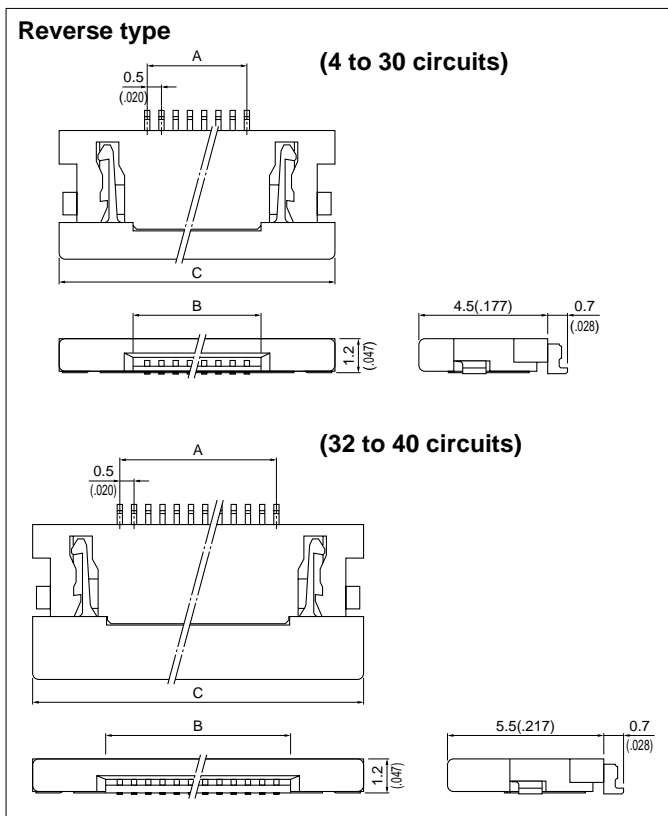
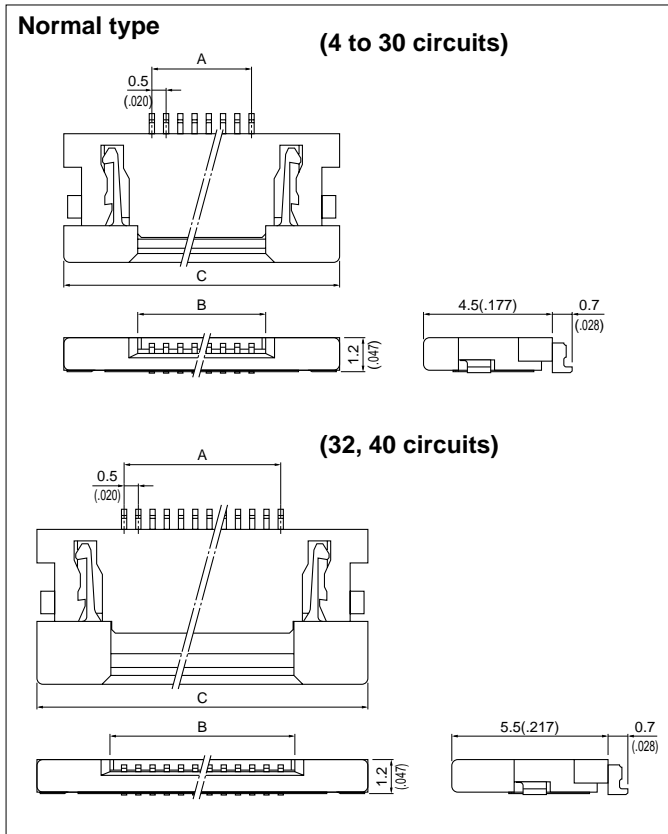
## Standards

Ⓜ Recognized E60389

Ⓢ Certified LR20812

# FLH CONNECTOR

## Connector



Circuits	Model No.	Dimensions mm(in.)			Q'ty / reel
		A	B	C	
4	<b>04FLH-SM1-TB</b>	1.5(.059)	2.55(.100)	7.7(.303)	3,000
6	<b>06FLH-SM1-TB</b>	2.5(.098)	3.55(.140)	8.7(.343)	3,000
7	<b>07FLH-SM1-TB</b>	3.0(.118)	4.05(.159)	9.2(.362)	3,000
8	<b>08FLH-SM1-TB</b>	3.5(.138)	4.55(.179)	9.7(.382)	3,000
10	<b>10FLH-SM1-TB</b>	4.5(.177)	5.55(.219)	10.7(.421)	3,000
11	<b>11FLH-SM1-TB</b>	5.0(.197)	6.05(.238)	11.2(.441)	3,000
12	<b>12FLH-SM1-TB</b>	5.5(.217)	6.55(.258)	11.7(.461)	3,000
13	<b>13FLH-SM1-TB</b>	6.0(.236)	7.05(.278)	12.2(.480)	3,000
14	<b>14FLH-SM1-TB</b>	6.5(.256)	7.55(.297)	12.7(.500)	3,000
15	<b>15FLH-SM1-TB</b>	7.0(.276)	8.05(.317)	13.2(.520)	3,000
16	<b>16FLH-SM1-TB</b>	7.5(.295)	8.55(.337)	13.7(.539)	3,000
17	<b>17FLH-SM1-TB</b>	8.0(.315)	9.05(.356)	14.2(.559)	3,000
18	<b>18FLH-SM1-TB</b>	8.5(.335)	9.55(.376)	14.7(.579)	3,000
20	<b>20FLH-SM1-TB</b>	9.5(.374)	10.55(.415)	15.7(.618)	3,000
21	<b>21FLH-SM1-TB</b>	10.0(.394)	11.05(.435)	16.2(.638)	3,000
22	<b>22FLH-SM1-TB</b>	10.5(.413)	11.55(.455)	16.7(.657)	3,000
24	<b>24FLH-SM1-TB</b>	11.5(.453)	12.55(.494)	17.7(.697)	3,000
26	<b>26FLH-SM1-TB</b>	12.5(.492)	13.55(.533)	18.7(.736)	3,000
28	<b>28FLH-SM1-TB</b>	13.5(.531)	14.55(.573)	19.7(.776)	3,000
30	<b>30FLH-SM1-TB</b>	14.5(.571)	15.55(.612)	20.7(.815)	3,000
32	<b>32FLH-SM1-TB</b>	15.5(.610)	16.55(.652)	21.7(.854)	3,000
40	<b>40FLH-SM1-TB</b>	19.5(.768)	20.55(.809)	25.7(1.012)	3,000

### Material and Finish

Contact: Copper alloy, copper-undercoated, tin/lead-plated  
Housing: LCP, UL94V-0  
Solder tab: Copper alloy, copper-undercoated, tin/lead-plated  
Slider: Modified nylon 6T, UL94V-0

Note: The products listed above are supplied on embossed tape.

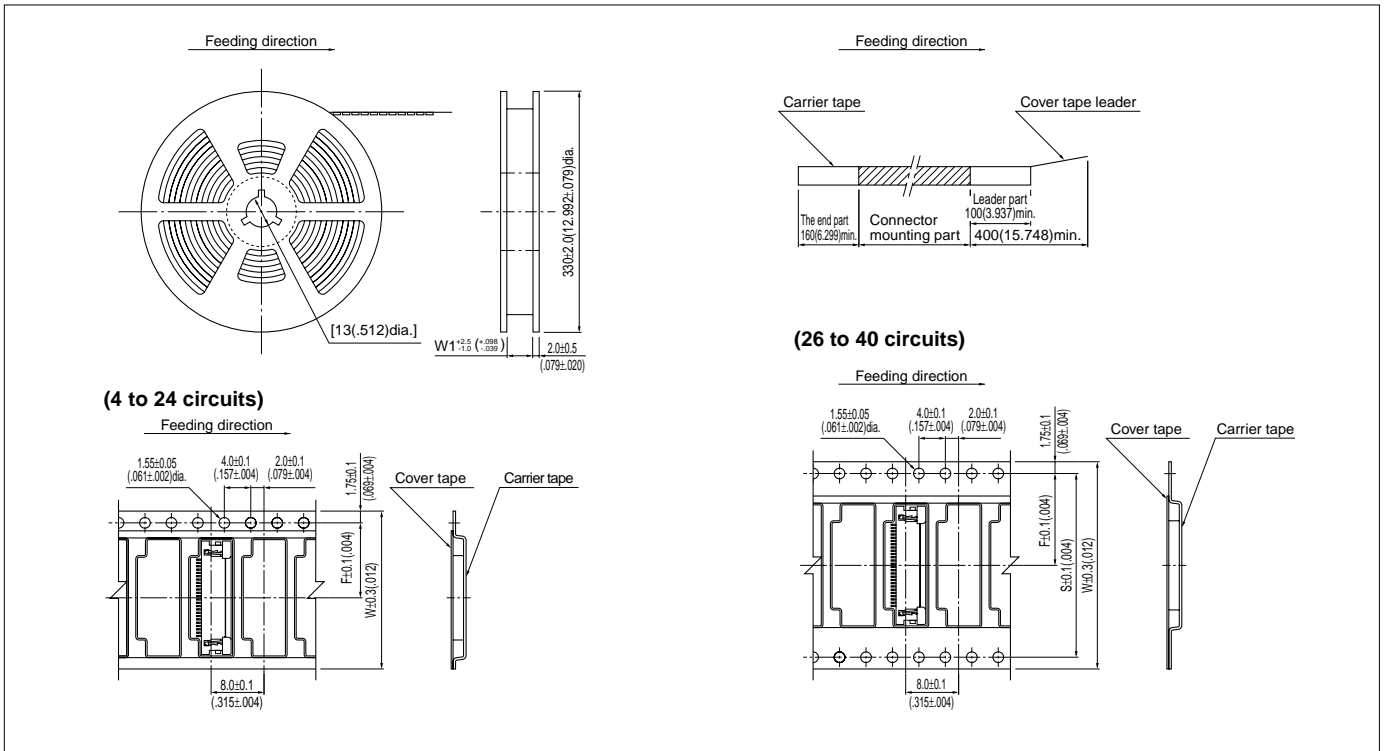
Circuits	Model No.	Dimensions mm(in.)			Q'ty / reel
		A	B	C	
4	<b>04FLH-RSM1-TB</b>	1.5(.059)	2.55(.100)	7.7(.303)	3,000
6	<b>06FLH-RSM1-TB</b>	2.5(.098)	3.55(.140)	8.7(.343)	3,000
7	<b>07FLH-RSM1-TB</b>	3.0(.118)	4.05(.159)	9.2(.362)	3,000
8	<b>08FLH-RSM1-TB</b>	3.5(.138)	4.55(.179)	9.7(.382)	3,000
10	<b>10FLH-RSM1-TB</b>	4.5(.177)	5.55(.219)	10.7(.421)	3,000
11	<b>11FLH-RSM1-TB</b>	5.0(.197)	6.05(.238)	11.2(.441)	3,000
12	<b>12FLH-RSM1-TB</b>	5.5(.217)	6.55(.258)	11.7(.461)	3,000
13	<b>13FLH-RSM1-TB</b>	6.0(.236)	7.05(.278)	12.2(.480)	3,000
14	<b>14FLH-RSM1-TB</b>	6.5(.256)	7.55(.297)	12.7(.500)	3,000
15	<b>15FLH-RSM1-TB</b>	7.0(.276)	8.05(.317)	13.2(.520)	3,000
16	<b>16FLH-RSM1-TB</b>	7.5(.295)	8.55(.337)	13.7(.539)	3,000
17	<b>17FLH-RSM1-TB</b>	8.0(.315)	9.05(.356)	14.2(.559)	3,000
18	<b>18FLH-RSM1-TB</b>	8.5(.335)	9.55(.376)	14.7(.579)	3,000
19	<b>19FLH-RSM1-TB</b>	9.0(.354)	10.05(.396)	15.2(.598)	3,000
20	<b>20FLH-RSM1-TB</b>	9.5(.374)	10.55(.415)	15.7(.618)	3,000
22	<b>22FLH-RSM1-TB</b>	10.5(.413)	11.55(.455)	16.7(.657)	3,000
24	<b>24FLH-RSM1-TB</b>	11.5(.453)	12.55(.494)	17.7(.697)	3,000
28	<b>28FLH-RSM1-TB</b>	13.5(.531)	14.55(.573)	19.7(.776)	3,000
30	<b>30FLH-RSM1-TB</b>	14.5(.571)	15.55(.612)	20.7(.815)	3,000
32	<b>32FLH-RSM1-TB</b>	15.5(.610)	16.55(.652)	21.7(.854)	3,000
34	<b>34FLH-RSM1-TB</b>	16.5(.650)	17.55(.691)	22.7(.894)	3,000
40	<b>40FLH-RSM1-TB</b>	19.5(.768)	20.55(.809)	25.7(1.012)	3,000

### Material and Finish

Contact: Copper alloy, copper-undercoated, tin/lead-plated  
Housing: LCP, UL94V-0  
Solder tab: Copper alloy, copper-undercoated, tin/lead-plated  
Slider: Modified nylon 6T, UL94V-0

Note: The products listed above are supplied on embossed tape.

## Taping specifications

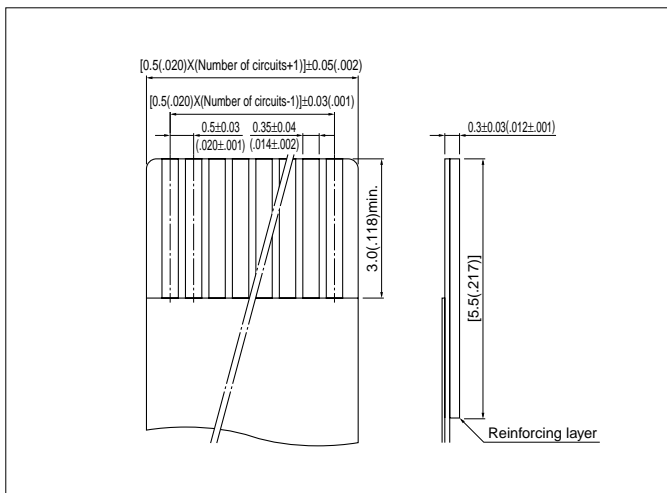


Circuits	Taping dimensions mm(in.)			Reel dimensions mm(in.)	Qty / reel
	F	S	W	W1	
4 to 8	7.5(.295)	-	16.0(.630)	17.5(.689)	3,000
10 to 24	11.5(.453)	-	24.0(.945)	25.5(1.004)	3,000
26 to 30	14.2(.559)	28.4(1.118)	32.0(1.260)	33.5(1.319)	3,000
32 to 40	20.2(.795)	40.4(1.591)	44.0(1.732)	45.5(1.791)	3,000

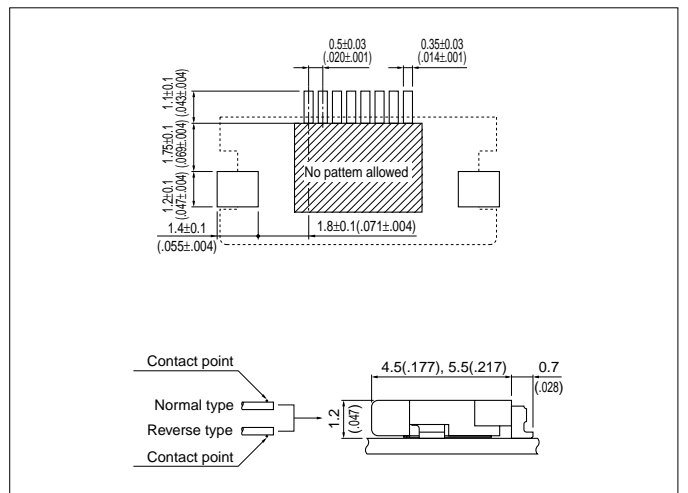
**Note:**

- Specifications conform to JIS C 0806. The tape width, connector loading recess square hole dimensions, etc. are determined by the number of circuits and external shape of the connector to be loaded.
- Specifications are subject to change without prior notice.

## Lead section dimensions of FPC



## PC board layout (viewed from component side) and Assembly layout



**Note:**

- Tolerances are non-cumulative:  $\pm 0.03\text{mm} (\pm .001")$  for all centers.
- The dimensions above should serve as a guideline. Contact JST for details.